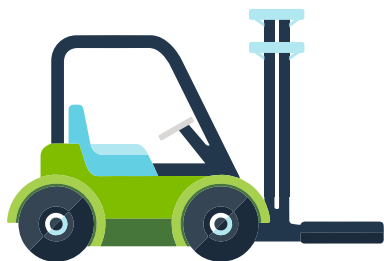


What If...

Envision Real-time Warehouse Orchestration

You mean things didn't happen according to plan?

AutoScheduler can help. The AutoScheduler solution adapts and rebalances activities based on what happens inside the warehouse every few minutes.



What If... You were able to smooth out labor demand and reduce peak workloads?

Reducing one worker per shift making \$25 per hour at a two-shift facility **saves over \$100K** annually.



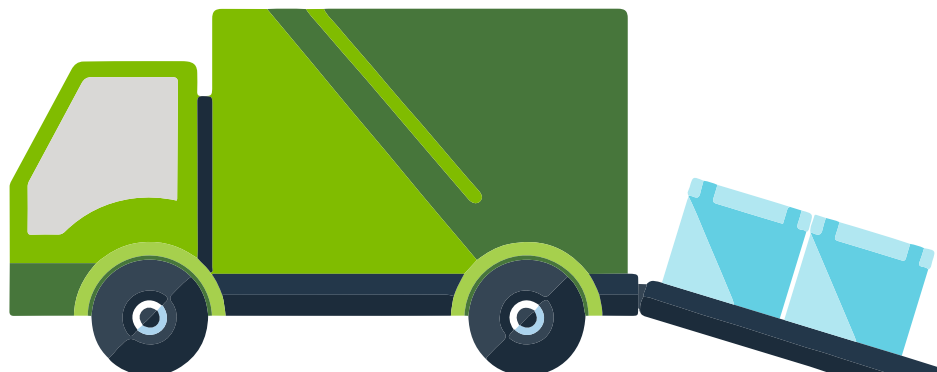
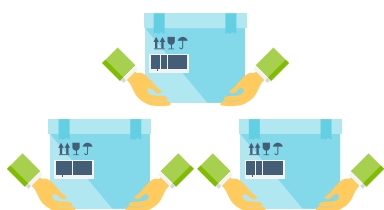
What If... You had the opportunity to replan activities every 20 minutes using all available data?

Moving from three to one planners per shift at \$30 per hour at a two-shift facility saves nearly \$250K annually and **improves OTIF (2+% increase)** with less detention and demurrage.



What If... You planned for more cross docks by creating the optimal dock schedules?

Every cross dock saves between \$1.80 and \$3.00 per pallet in retrieval and put-away costs. At big sites, this can add up to **thousands in savings** per year.



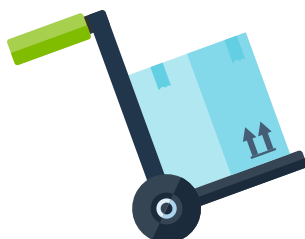
What If... You only released orders for picking when inventory was available?

If 3% of items at a site picking 50,000 cases per day require repicking because inventory is not available, then this equates to 450,000 cases per year.

What If... You could minimize shuttles and transfers by orchestrating inventory levels and dock schedules?

A fully loaded transfer (loading + unloading + shuttle fee) costs over \$150. If your site sends 5,000 per year, a 30% reduction through AutoScheduler would save **\$225K annually**.

Try Our **Free ROI Calculator**
autoscheduler.ai



Contact Us to request an initial assessment: info@autoscheduler.ai
4650 Everal Lane, Franklin, TN 37064 615-428-2035 autoscheduler.ai