

# Case Study Top Tier Freight Provider

Site Savings Exceeded \$700K,  
with \$400K in Labor Efficiency Gains

## Site Details

- Facility - 780,000 square foot warehouse
- Two overflow facilities feed into Brampton
- 10M cases picked per year
- 600K pallets shipped per year

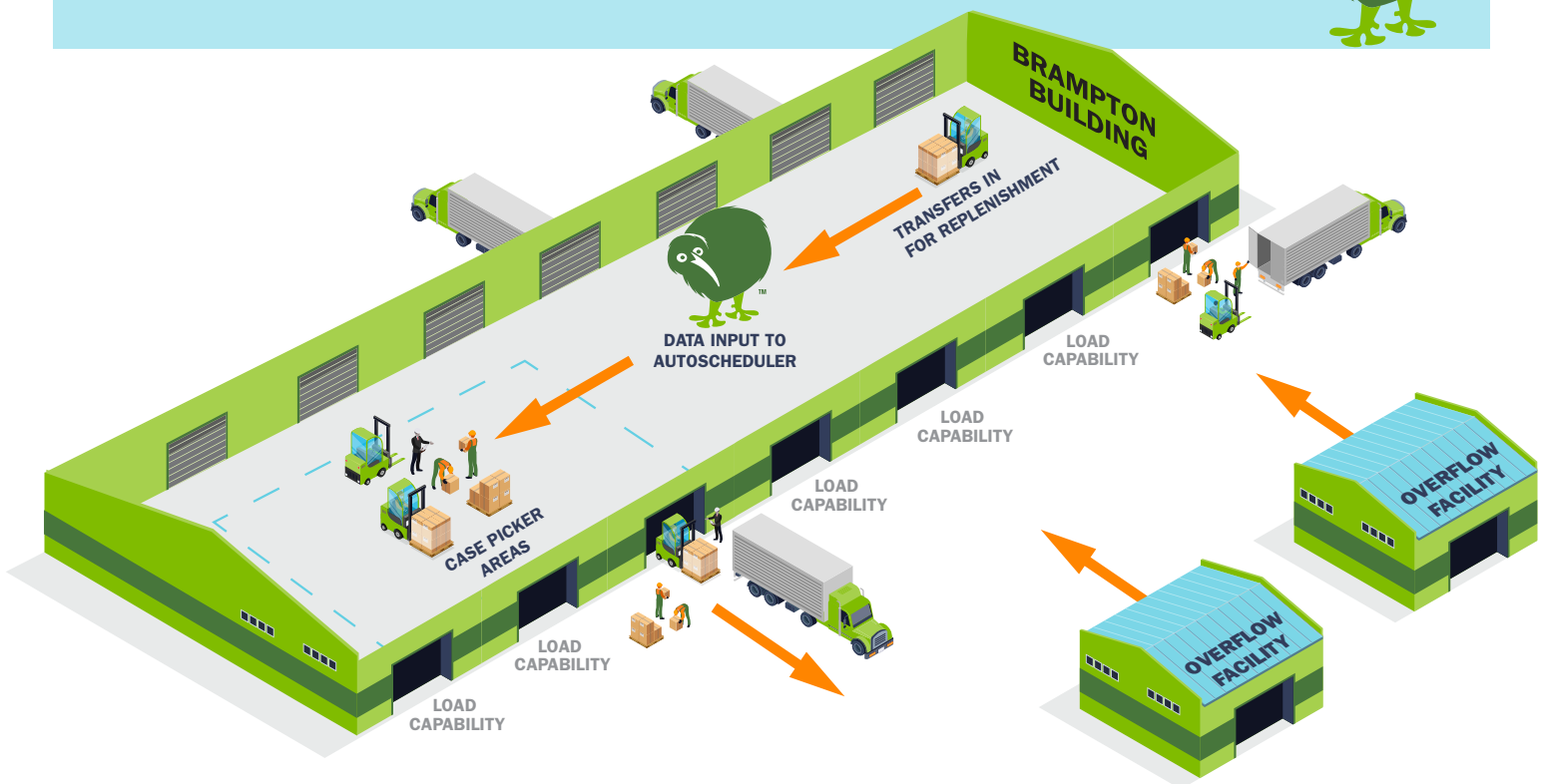
## Challenges

The increasing demand at the Brampton site has identified a need for increased efficiency in inventory management and the need to implement labor-smoothing practices to reduce costs.

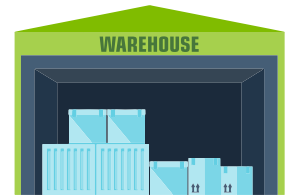
## AutoScheduler.AI Implemented Solution

After the planning process, two key areas (re-picks and labor) were mapped with the goal of proving cost savings. As a result, AutoScheduler reduced the need for additional pallets (i.e., re-picked orders) by appropriately sequencing inbounds, replenishment, and picking.

Secondly, the AutoScheduler solution rolled out a capacity-constrained approach to labor smoothing. AutoScheduler accounts for personnel and creates the optimal plan to get everything done while minimizing scenarios such as overtime work. This was executed for all loaders, unloaders, replenishment staff, and case pickers.



# Case Study Top Tier Freight Provider



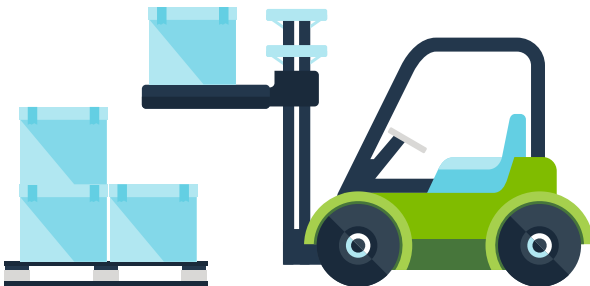
## Success Metrics

- Reduced repicks by 10% (five physical pallets reduced per load).
- At an estimated 44 loads per day year-round and a fixed pallet cost of \$4.50, there is potential to save \$380,000 in pallet rental costs per year.
- Reduced 14,000 labor hours in picking time. At \$29.00 per hour, this equates to a \$407K labor cost reduction.
- Automatically plan transfers and increased throughput capacity.
- Maximized OTIF metrics.

## Next Steps

There is continued opportunity for AutoScheduler to reduce costs, expedite planning, and relieve friction in task interleaving between teams.

AutoScheduler can help automate the planning of inbound sequencing, outbound loading, case pick, replenishment, bring-backs from overflow buildings, and analysis of outbound building use.



Contact us to request an initial assessment: [info@autoscheduler.ai](mailto:info@autoscheduler.ai)  
4650 Everal Lane, Franklin, TN 37064 512-277-5048 [autoscheduler.ai](http://autoscheduler.ai)

